



SEPTEMBER - DECEMBER 2017

NATURE EXPLORER

ACTIVITIES & NEWS

FOR MEMBERS AND SUPPORTERS OF DELAWARE NATURE SOCIETY



Coverdale Farm Preserve
Photography by Joe Sebastiani

Board of Directors

PRESIDENT

Jeff Pantazes

VICE PRESIDENT

Eric J. Brinsfield

TREASURER

Julie Pfeffer

SECRETARY

Margaretta Frederick

PAST PRESIDENT

Christine Carlisle Odom

BOARD OF DIRECTORS

Steve Allen

Dan Barbato

Barbara Borleske

Mark Carter

Kevin Donnelly

Sally Feeley

Pamela S. Finkelman

Cristina Frank

Barbara Greenewalt

Clifford H. Hunter

Ellen Kohler

Dawn Rittenhouse

James M. Seif

Dale Stratton

Gerald Street

Lowell T. Underhill

Roland Wall

Marian R. Young

HONORARY DIRECTORS

Bernard Dempsey

Lorraine M. Fleming

Peter H. Flint

Nancy Frederick

Michael E. Riska

Norman G. Wilder

Lynn Williams

EXECUTIVE DIRECTOR

Brian P. Winslow

Nature's Explorer Sep - Dec 2017

PUBLISHER

Joanne McGeoch

EDITOR

Shannon Giordano

Stephanie Sturmfels

DESIGN

Christi Leeson

CONTACT US

P.O. Box 700, Hockessin, DE
19707 302.239.2334

www.DelNature.org

Letter from our Executive Director and Director of Education



Brian Winslow

Brian Winslow
Executive Director



Helen Fischel

Helen Fischel
Director of Education
& Organizational
Development



Friends,

Nature Explorer is just one way to find out what is happening at Delaware Nature Society and how to get involved. To stay in the know, follow us on [Facebook.com/DelawareNatureSociety](https://www.facebook.com/DelawareNatureSociety), [Instagram.com/DelNature](https://www.instagram.com/DelNature), [Twitter.com/DENatureSociety](https://twitter.com/DENatureSociety) or sign up for our e-newsletter at DelNature.org/eNews. Continue to check out our website for additional programs.

Coming up in October is **Children in Nature** month and we invite you to participate in an outdoor activity with a child in your life this fall. This movement was started several years ago recognizing that getting kids outdoors and frequent interaction with nature improves physical health, mental awareness, and instills an awareness and love of nature that later can transfer to environmentally responsible citizens. We kick-off Children in Nature Month with our Harvest Moon Festival October 7-8.

At Delaware Nature Society, we've witnessed this transformation from awareness to action in the many students, volunteers, and interns we've introduced to nature over our 53 year history. We thank all of the families that participate in our camps and programs, and we're proud of the many ecofriends that we now have all over the world enjoying and working to protect our environment. See the article on Young Waterfowlers, where youth learn about waterfowl, wetland habitats, and conservation in a multi-session program.

It doesn't stop with youth; adults participate in programs to improve their knowledge or just for fun. And many adventures await our adult members locally and even internationally with our eco tours program. Many of our adult participants go on to use their knowledge to improve our environment as volunteers like Dan Barbato who helps to monitor local water quality and Peter Flint who received our Lifetime Achievement Award.

Whatever you're doing this fall, make time to **#Take5Outside** for a better environment. Every action makes a difference. A great way to start, and learn how we're improving the water in our Delaware River and Bay, is by attending RiverDays activities at DEEC on Saturday, September 23 from Noon – 4 pm. Join us to learn more about the Delaware River and watershed.

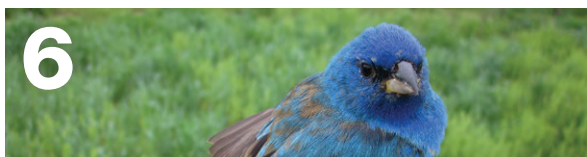
See you outdoors!



Contents



Planting the Seeds for **Regenerative Agriculture**



Bird Conservation



Activities

- 7 Map and Location Addresses
- 8 Our Locations & Ongoing Activities
- 12 Activities by Month
- 28 Eco Tours
- 31 Registration Form



Young Waterfowlers

Connecting the Next Generation
to the Outdoors



Peter Flint

Receives Lifetime Achievement Award



2017 Advocacy Agenda



Volunteer Dan Barbato

Become a member. Make a difference.

Your membership helps us
advocate, educate, and conserve to
support our local ecosystems and
promote clean water and land, for the
health of people and wildlife.

Member Benefits

Program & camp discounts | Free admission to
some events | Special members-only activities
Join our nature-loving community

DelNature.org/BecomeAMember | 302.239.2334




Planting the Seeds for **Regenerative Agriculture**

Coverdale Farm Preserve Mission & Vision as defined through the Coverdale Master Plan

Believing that healthy food, healthy communities, and a healthy environment are among the rights of all people, Coverdale Farm Preserve manages its 356-acre Farm and Preserve as an ecosystem, an interconnected and integrated network of forest, streams, fields, ponds, food, and farm that nourish the landscape and all its inhabitants – from soil to stomach while preserving & protecting critical natural areas. Coverdale experiments to adapt and refine regenerative agricultural methods to fit this unique landscape by mimicking natural processes and demonstrating that systems-based, productive, and economically viable farming is an act of conservation and preservation.





Over the past year, Delaware Nature Society embarked on a comprehensive master planning process for Coverdale Farm Preserve. Our findings were exciting and revolutionary. Not only will we continue to enhance the way people connect to their food, we will further enhance how our land management practices, specifically through the act of regenerative agriculture, can have a profound and positive impact on the environment.

Many people may know Coverdale Farm through the Community Supported Agriculture (CSA) or the wonderful farm-to-school education programs we offer to thousands of visiting school children, families and community groups. We have nearly 20 years practice and experience leading the region in farm education programs. Our more than 25 years of careful land management practices in the adjoining nature preserve areas (the highest form of land conservation) is an influencing factor of why farming should contribute to conservation and a healthier environment.

With the implementation of Coverdale Farm Preserve's new master plan, these important practices will not only stay intact, they will be deepened and further developed to support a changing climate and growing community. What you may see changing soon, are new ways in which we will contribute to the local food system. We'll be adapting our farming methods to work in concert with natural ecosystems, blending the lines between the nature preserve and our agriculture lands; we will institute regenerative agriculture methods (rotational grazing, which utilizes livestock in a leader-follower system, benefiting the health of the animals, and the soil); and we will begin offering more adult programs, including beginning and urban farmer programs, aimed at raising a new generation of farmers to support a growing, healthy population.

Over the next two years, we will begin to implement some practices that will be noticeable on the farm. Here is a snapshot of some new components we've begun this year.

Through a generous grant from the Delaware Department of Agriculture we were able to expand our vegetable production and develop programming for beginning and urban farmers. A series of workshops including high tunnel construction, specialty crop, soil health, integrated pest management techniques, and season extension have been offered to new, urban, beginning, and transitioning

farmers. The addition of two new high tunnels will allow us to experiment and refine our techniques in protective growing and season extension. This will result in new, delicious varieties of heirloom tomatoes, and traditionally out-of-season crops continuing through winter (peppers, eggplants, tomatoes).

Building on the success of our previous year's mobile chicken houses ("Egg-mobiles"), we have launched a pasture-raised turkey program. With generous funding from our friends Bob Kleszics and Karen Ashley of Harvest Market, we are expanding our rotational bird grazing to include a variety of conventional and heritage breeds of turkeys. They will be ready in time to adorn the harvest at your holiday celebrations. After consulting with our friend, Dean Carlson at Wyebrook Farm, we constructed some hoop-framed turkey houses that will be integrated into our grazing plans, following the cows and sheep.

Perhaps one of the most important elements of our master plan implementation is through the integration of the leader-follower system, and the introduction of the leaders – our Red Devon cows. This spring, we consulted with a brilliant farmer, Jeremy Engh, of Lakota Ranch. Lakota Ranch is a production model for organic and grass-fed beef operations. Located just outside Remington, Virginia on the Rappahannock River, Lakota Ranch is home to the oldest and most prominent Devon beef cattle herd in the country. This gorgeous breed is an efficient consumer of pasture, has a docile nature, and produces high quality meat. The Red Devons would fit our landscape and grazing program perfectly. Jeremy offered Delaware Nature Society a great price for a male and female. They were introduced to our farm fields in April, and are grazing alongside our Jersey cows, while we prepare the front grazing fields (approximately 30+ acres) for our polycrop seed mix of 20 to 40 species of warm and cool season grasses, legumes, herbs, and forbs.

We have a lot of work ahead of us to bring the comprehensive vision for Coverdale Farm Preserve to fruition. We encourage you to visit us and get involved, this is such an exciting chapter in the history of such an amazing farm. A place where farming and eating are truly joyful acts of environmental conservation.

Coverdale Farm Preserve
Photography by Ian Stewart

Bird Conservation

*By Ian Stewart, Ornithologist and
Joe Sebastiani, Ashland Nature Center Manager*

These are exciting times for our Bird Conservation Program! Thanks to generous support from a host of donors and help from a dedicated team of volunteers, we are continuing our public bird banding sessions on Mondays at Ashland and Wednesdays at Bucktoe Creek Preserve. Many people of all ages have come by to see birds up close and observe the banding process.

We are also continuing to color-band Eastern Bluebirds at several of our sites as part of a study of nest box faithfulness and overwintering status. This is a Citizen Science initiative in which members of the public let us know when they have seen a color-banded Bluebird and, in some cases, send us the color-band combination of their bird or even a photograph!

Birds of conservation such as the Wood Thrush will benefit from our exciting new study. Last winter, we cleared Multiflora Rose, an invasive exotic plant, from five half-acre plots at Bucktoe Creek Preserve, and we are currently comparing which birds feed and nest in the cleared plots compared to plots where the invasive rose bushes were left in place. We will be continuing this study into the fall and winter to focus on habitat use by both migrating and overwintering birds. Our short-term aim is to see whether this simple habitat management benefits birds, but our long-term vision is to replace all of these alien plants with a diversity of native plants to provide better homes and food for birds.

Thanks to your support, we are better able to understand the habitat needs of our birds and help them as much as possible!

Visit DelNature.org/BirdBanding to learn more.

Our notable achievements

Showed that several species live in the same area year-round...

by banding birds during the summer then recapturing the same individuals in the winter.

Birds we caught during both the summer and winter in the same location include
17 Tufted Titmice, 10 Carolina Chickadees, 7 Song Sparrows,
6 Cardinals, and 5 Downy Woodpeckers.

Recaptured several migrants in successive years in the same location.

The summer visitors we have recaptured include a Wood Thrush, Red-eyed Vireo and several Gray Catbirds, and the winter visitors include both White-crowned and White-throated Sparrows. It never ceases to amaze us that these small birds (some less than 20 grams) may spend their summer or winter over a thousand miles away and yet still come back to the same relatively tiny piece of land!

Observed 10 of our 178 color-banded Bluebirds during the colder months,

confirming that at least some of them spend the whole year in the Red Clay Valley.

Published articles about the presence of ticks on banded birds...

and documented the capture of a Black-capped Chickadee, the northern counterpart to our common Carolina Chickadee which only comes south when food is in short supply.

Incorporated bird banding into the popular Young Ornithologists camp.

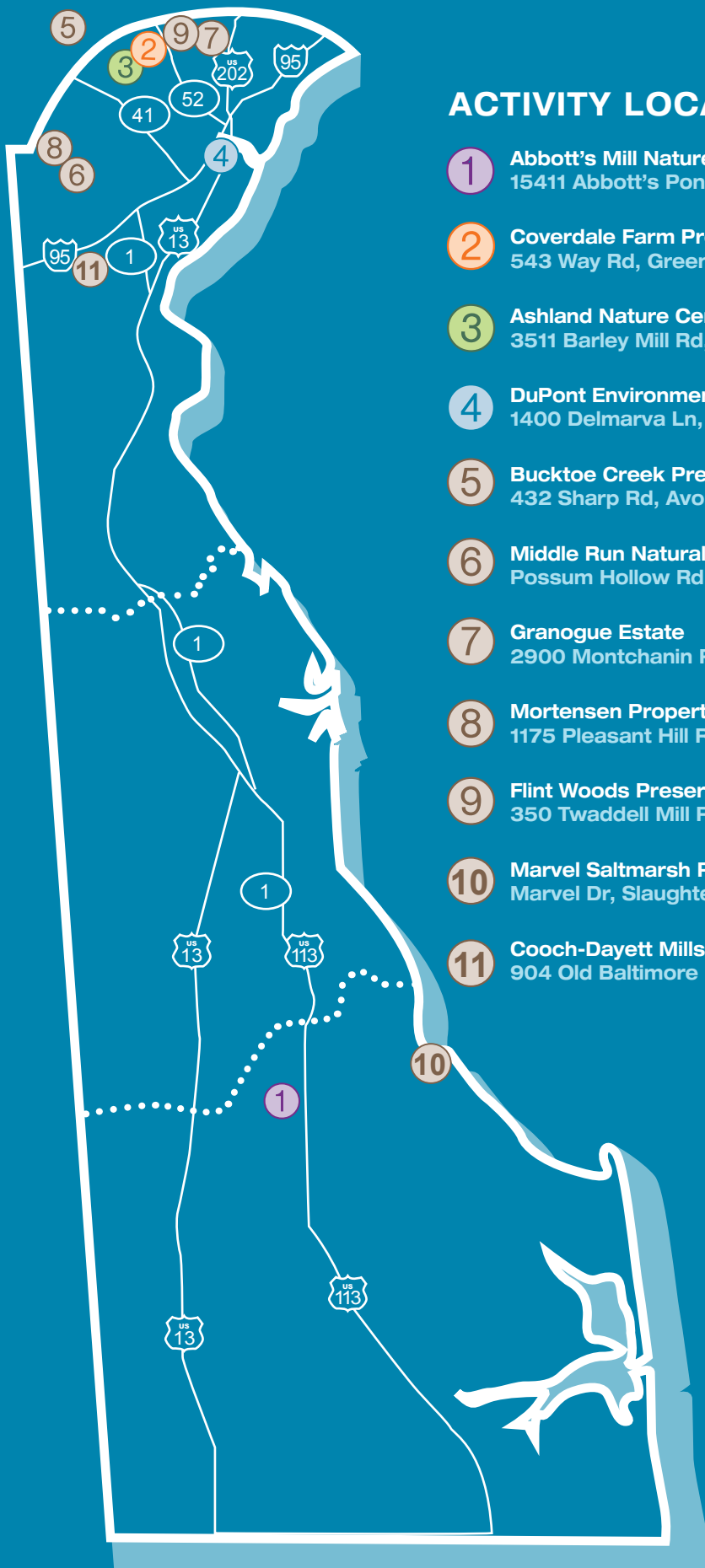
This is one of the most important things we do – encouraging an interest in birds among young people who may end up being their future conservation champions!

Conducted surveys of wintering birds at Coverdale Farm Preserve...

to see how our current land management practices are affecting bird populations.



Coverdale Farm Preserve Photography by Joe Sebastiani



ACTIVITY LOCATIONS

- 1** **Abbott's Mill Nature Center**
15411 Abbott's Pond Rd, Milford, DE 19963
- 2** **Coverdale Farm Preserve**
543 Way Rd, Greenville, DE 19807
- 3** **Ashland Nature Center**
3511 Barley Mill Rd, Hockessin, DE 19707
- 4** **DuPont Environmental Education Center**
1400 Delmarva Ln, Wilmington, DE 19801
- 5** **Bucktoe Creek Preserve**
432 Sharp Rd, Avondale, PA 19311
- 6** **Middle Run Natural Area**
Possum Hollow Rd, Newark, DE 19711
- 7** **Granogue Estate**
2900 Montchanin Rd, Wilmington, DE 19807
- 8** **Mortensen Property**
1175 Pleasant Hill Road, Newark, DE 19711
- 9** **Flint Woods Preserve**
350 Twaddell Mill Rd, Wilmington, DE 19807
- 10** **Marvel Saltmarsh Preserve**
Marvel Dr, Slaughter Beach, DE 19963
- 11** **Cooch-Dayett Mills**
904 Old Baltimore Pike, Newark, DE 19702

Ashland Nature Center

Visit us

3511 Barley Mill Road, Hockessin, DE • 302.239.2334

Visitor Center

Daily 8:30 am - 4:30 pm (Sat - Sun during Apr - Nov only)

Trails & picnic area

Open daily, dawn to dusk

Members FREE • Non-members: Adult \$5, Child age 2+ \$3

Attractions

4 miles of interpreted trails | Bird Observatory
Butterfly House (thru Sep) | Hummingbird Haven (thru Sep)

DelNature.org/Ashland



Ashland Hawk Watch

Daily, Sep 1 - Nov 30

9 am - 4 pm

Hawk Watch Hill

FREE - just show up



Bird Banding

Mondays thru Nov

8 am, Ashland

Wednesdays thru Nov

8 am, Bucktoe

FREE - just show up



Wild & Wonderful Weekends

Nature Walks at Ashland

Saturdays & Sundays thru Nov

10 am & 2 pm

FREE - just show up

DuPont Environmental Education Center

Visit us

On Wilmington's Riverfront
1400 Delmarva Lane, Wilmington, DE • 302.239.2334

Visitor Center

Tue - Sat 11 am - 5 pm • Sun 12 pm - 4 pm

Pond Loop & garden

Daily, dawn to dusk

DelNature.org/DEEC

Lunch with Live Animals

Saturdays thru Oct
Noon - 12:30 pm
FREE - just show up

Meet Marsh Animals

Saturdays - Sundays thru Oct
1 pm - 1:45 pm
FREE - just show up



Netting in the Marsh

Tuesdays - Sundays thru Oct
2 pm - 2:45 pm
FREE - just show up

Marshes & Monarchs Celebration

Sat, Sep 23, Noon - 4 pm
Details on back cover

Coverdale Farm Preserve

Visit us

543 Way Road, Greenville, DE • 302.239.2334

Farm Fun Days with Farm Fresh Market Wednesdays and Saturdays are full of farm fun

Stop by to visit the animals. Shop our farm fresh market for Coverdale vegetables and eggs, local food favorites, and more.

Wednesdays 11 am - 6 pm • Saturdays 9 am - 4 pm
Members FREE • Non-members: Adult \$5, Child age 2+ \$3
May - October

DelNature.org/Coverdale



Sign up for our CSA
June - October
Shares are pro-rated after June



Harvest Moon Festival
October 7 & 8
10 am - 5 pm

Abbott's Mill Nature Center

Visit us

15411 Abbotts Pond Road, Milford, DE • 302.422.0847

Visitor Center

Mon - Fri, 9 am - 4 pm • Sat - Sun, Noon - 4 pm (thru November)

Trails & picnic area

Open daily, dawn to dusk, FREE entry

Attractions

5+ miles of pet-friendly trails • 20-acre pond with public access
Handicap accessible stream-side boardwalk

DelNature.org/AbbottsMill



Running of the Mill

3rd Saturdays thru Nov
2 pm - 3:30 pm

Members FREE

Non-members

Adult \$5, Child age 2+ \$3



Photography by Jim White

Beginning Bird Walks

Thursdays thru Oct
8:30 am - 10 am

FREE - just show up



Naturalist Weekend Programs

Activities and guided hikes
Saturdays & Sundays thru Nov
Stop by anytime Noon - 4 pm
FREE - just show up

September

PRESCHOOLERS

Children must be accompanied by an adult, free of cost.

Wed, 9/13 | 10 am – 11 am | Age 2-5

Le Petit Yogi

Led by Courtney Loughney
Roll down into a pumpkin pose and walk into downward facing dog! Children must be accompanied by an adult, free of cost.

Meets at Coverdale

Mem \$10 | Non-mem \$15 | F17136CF

Fri, 9/22 | 9:30 am – 11 am | Age 2-5

Using Cool Tools: Hammers and Nails

Led by Judy Montgomery
Learn about hammers and nails! Try using them! Then create a frame to hold a picture of YOU! Children must be accompanied by an adult, free of cost.

Meets at Ashland

Mem \$9 | Non-mem \$14 | F17036AS

JUST KIDS

Kids discover nature with our safety-certified instructors.



Last Sundays 9/24 – 12/17 | 9 am – 12 pm
Age 9-12

Young Naturalist Club

Led by Jeff Haas
Join this group of nature lovers and explorers for monthly adventures. Hike, explore streams, woods, fields and wetlands in search of wildlife.

Visit local natural areas.

Meets at Ashland

Members only \$60 | F17050AS

Thu, 9/21 | 8:30 am – 5 pm | Age 5-12

Day Camp: Marshy Adventures

Led by DEEC staff
Discover Wilmington's wildlife! Go on a safari, catch fish, toads, and more. Aftercare is available from 3:30 pm – 5 pm at no additional charge. Bring a bag lunch and dress for the outdoors.

Meets at DEEC

Mem \$55 | Non-mem \$75 | F17291DC

FAMILY FUN

Enjoy hands-on nature experiences together. Children must be accompanied by an adult.

Sat, 9/2 | 6:30 pm – 8 pm | All Ages

Back to School Party and Marshmallow Roast

Led by Ashland staff
Celebrate with your family and friends to kick-off the fall season! Wear your "school colors" shirt, hat or face paint! Bring a school friend! Roast some marshmallows over a campfire and enjoy fall games and festivities.

Meets at Ashland

Mem \$5 | Non-mem \$7 | F17067AS

Sat, 9/9 | 11 am – 1 pm | All Ages

Pollinator Power

Led by Rob Wiest & Sheila Vincent
Learn about the power of pollinators and search our fields with nets to see how many of these helpers you can catch! It's not just our farmers who keep our vegetables growing strong. Bring a bagged supper to enjoy at our picnic grove afterwards. Registration required.

Meets at Coverdale

Mem FREE | Non-mem \$10 | F17166CF

Green by Nature Preschool Series

Join us for hands-on nature discovery outdoors with our professional team of Teacher Naturalists.

Age 2 – 5 | \$6 Member child, \$10 Non-member child per class
Locations alternate | Tuesdays, 9:30 am – 11 am
Parental participation required (free)

9/5	Farm Art Adventures	Coverdale	F17131CF
9/12	Magical Monarchs	Ashland	F17030AS
9/19	The Grouchy Ladybug	DEEC	F17230DC
9/26	Fluttering Butterflies & Busy Bees	Coverdale	F17132CF

Get full schedule, program descriptions, and register:
DelNature.org/Preschool | 302.239.2334

Knee-high Naturalists Series

Join us for hands-on nature discovery outdoors with our professional team of Teacher Naturalists.

Age 2 – 5 | \$4 Member child, \$7 Non-member child per class
Abbott's Mill Nature Center | Wednesdays, 9:30 am – 11 am
Parental participation required (free)

9/6	Back to School	F17331AM
9/13	An Apple a Day	F17332AM
9/20	Nature's ABC's	F17333AM
9/27	Nature's 123's	F17334AM

Get full schedule, program descriptions, and register:
DelNature.org/Preschool | 302.239.2334

FAMILY FUN (CONTINUED)

Enjoy hands-on nature experiences together. Children must be accompanied by an adult.

Sun, 9/10 | 1 pm – 3 pm | All Ages

Free Family Nature Walks: Marvelous Monarchs

Led by Dawn Coughlan
Bring the family to explore the trails and wildlife with a focus on monarch butterflies of the Bucktoe Creek Preserve. This program, part of the Bucktoe Walks for Family Series, is sponsored by a private donor. Registration required.
Meets at Bucktoe
FREE for everyone | V17660BK

Sun, 9/10 | 3 pm – 5 pm | Age 6+

Chores and Dinner

Led by Ashley Harrell
Roll up your sleeves and lend a hand with afternoon farm chores. Help care for the animals of Coverdale. Then cook and enjoy a hearty dinner straight from the farm.
Meets at Coverdale
Mem \$12 | Non-mem \$16 | F17160CF

Sat, 9/9 | 11 am – 12 pm | All Ages

Family Yoga at Abbott's Series

Led by Free Spirited Foundation staff
Join Lewes' Free Spirited Foundation for outdoor yoga sessions for the whole family. Pack a picnic lunch to enjoy afterwards.
Meets at Abbott's Mill
Mem \$5 | Non-mem \$10 | U17361AM

Sat, 9/16 | 10:30 am – 12:30 am | All Ages

Moth and Butterfly Art

Led by Judy Montgomery
Explore beautiful fall gardens in search of swallowtails, fritillaries and our favorite – the monarch butterfly. Compare with some fabulous and local moth species.
Create a work of art to take home.
Meets at Ashland
Mem \$9 | Non-mem \$14 | F17068AS

Sat, 9/16 | 3 pm – 5 pm | Age 10+

Archery for Families

Led by Rob Yacucci
Test your skills with bow and arrow as we take on challenging targets at Ashland. Learn how Native Americans depended upon archery for survival. Who in your family is best at hitting the bullseye!
All equipment provided.
Meets at Ashland
Mem \$10 | Non-mem \$15 | F17063AS



Lenape Fun and Games

Sun, 9/17 | 1:30 pm – 3 pm | All Ages

Lenape Fun and Games

Led by Alison Altergott
Try Native American games. Sharpen your skills – throwing, coordination and observation! Hike to our Lenape longhouse. Make a game to take home.
Meets at Ashland
Mem \$9 | Non-mem \$14 | F17035AS

Fri, 9/22 | 6 pm – 7:30 pm | All Ages

Autumn Equinox Hike and Campfire

Led by Courtney McKinley & Sheila Vincent
Welcome autumn with an evening hike around Ashland. Scan the skies at Hawk Watch for raptors, monarchs, and nighthawks while enjoying the colors of sunset. Cap off the evening with a twilight campfire and treat.
Meets at Ashland
Mem \$6 | Non-mem \$10 | F17061AS

Sat, 9/23 | 10 am – 12 pm | All Ages

Brunch With Ainsworth Abbott

Led by Steve Childers
Over a light brunch of fruit and waffles, storyteller Steve Childers shares his insight about the fascinating life of Ainsworth Abbott. Mr. Abbott bought what we now call "Abbotts Mill" in 1919 and operated it by himself for over 40 years. Take a guided tour of his historic mill and learn its link is with George Washington and Thomas Jefferson.
Meets at Abbott's Mill
Mem \$10 | Non-mem \$20 | F17360AM

Sat, 9/23 | 12 pm – 4 pm | Age All

Marsh and Monarchs Celebration

Details on back cover.
Meets at DEEC

Sat, 9/23 – Sun, 9/24 | 5 pm – 10 am | All Ages

Family Campout at Bucktoe

Led by Rob Yacucci
Try camping at Bucktoe Creek Preserve in tents or an Adirondack shelter! Take a night hike, listen for owls, enjoy an evening bonfire. Hike the morning through fields and forests. BYO bag dinner. Breakfast and campfire treats provided. Household registration includes all members of a single household. Register one participant in the household.
Meets at Bucktoe Creek Preserve
Mem \$40/household
Non-mem \$55/household
F17076BK

Sun, 9/24 | 1 pm – 4 pm | All Ages

Grains, Bread, and Butter

Led by Mary Boeni
See what making this classic pairing from scratch is truly about! Grind grains and learn an easy process to make fresh butter right at home!
Meets at Coverdale
Mem \$14 | Non-mem \$19 | F17164CF

September

FAMILY FUN (CONTINUED)

Enjoy hands-on nature experiences together. Children must be accompanied by an adult.

Sun, 9/24 | 8 am – 5 pm | Age 8+

Tuckahoe Creek by Canoe

Led by Abbott's Mill & Pickering Creek Audubon Center staff

Explore the marshes of Tuckahoe Creek in search of wildlife. The paddle will be tranquil and relaxing. Start with an overview of the paddle, including seasonal animal identification tips, navigation pointers, and cultural history. Enjoy a self-guided hike at Adkin's Arboretum. Pack a bagged lunch and water. Van transportation provided. Includes paddling equipment and entrance fee to arboretum.

Meets at Abbott's Mill

Mem \$15 | Non-mem \$20 | F17362AM

Sat, 9/30 | 10 am – Noon | All Ages

Vitamin N: Nature Play for Families

Led by Courtney McKinley & Michele Jones

Nature provides great sensory experiences. Join Pediatric Occupational Therapist Michele Jones for a wild walk. Children will play in puddles, roll down hills, walk on logs, and build a fort while parents learn about the benefits of nature play in development. Geared for children 6 and under, but all are welcome.

Meets at Ashland

Mem \$3 | Non-mem \$5 | F17074AS

Sat, 9/30 | 3 pm – 5 pm | Age 10+

Archery for Families

Led by Rob Yacucci

Test your skills with bow and arrow as we take on challenging targets at Ashland. Learn how Native Americans depended upon archery for survival. Who in your family is best at hitting the bullseye! All equipment provided.

Meets at Ashland

Mem \$10 | Non-mem \$15 | F17064AS

ALL AGES

Adults or adults with children welcome.

Parents must accompany children.



2017 Volunteer Coastal Cleanup – Slaughter Beach

Sat, 9/2 | 9:30 am – 12:30 pm | Age 13+

Canoeing the Christina River and Marsh

Led by Ed Rohrbach

Paddle the urban marshlands of the Christina River. Get a closer look at our sea of green and a unique view of the city skyline. Immerse yourself in the grassy domain of Great Blue Herons, American Beaver and other marsh creatures.

Meets at DEEC

Mem \$15 | Non-mem \$20 | F17264DC

Sat, 9/16 | 9 am – 12 pm | All Ages

30th Annual Delaware Coastal Cleanup at Slaughter Beach

Led by Town of Slaughter Beach & Abbott's Mill staff

Join residents and friends of Slaughter Beach to help clean and protect our local beach community.

Meets at Slaughter Beach Volunteer Fire Pavilion, 357 Bay Ave, Slaughter Beach, DE
FREE for everyone | Just show up!

Drop by for our Recurring Programs

These programs happen weekly or daily. No registration required.

See pages 8 – 11 for ongoing drop-in programs at our main locations.

Ongoing drop-in programs at our other locations:

Bird Banding

Wednesdays thru Nov
8 am, FREE
Meets at Bucktoe



Nighthawk Watch

Daily, Aug 23 - Sep 3
3 pm – 8 pm, FREE
Meets at Bucktoe

Bird Walks

Tuesdays, Sep – Oct
8 am – 10 am, FREE
Meets at Middle Run

Thursdays, Sep – Oct
8 am – 10 am
Mem: FREE, Non-mem: \$10
Meets at Flint Woods

Sundays, Sep – Nov
8 am – 11 am, FREE
Meets at Bucktoe

ADULTS

Sat, 9/9 | 4 pm – 9 pm | Age 18+

Dragon Run Canoeing

Led by Brian Winslow
Paddle in the wildlife-rich Dragon Run Marsh. As you ply the swampy waters, quietly watch for Beaver, Muskrat, and River Otter while Tree Swallows and Wood Ducks zip by. This is a Delaware classic you need to experience!
Meets at Ashland
Mem \$30 | Non-mem \$45 | F17001AS

Tue, 9/12 | 6:30 pm – 8 pm | Age 21+

Basic Bike Maintenance 1 with Lifecycle

Led by Lifecycle staff
Learn bike maintenance basics from the pros. Campfire with s'mores and beer.
Meets at Abbott's Mill
Mem \$20 | Non-mem \$20 | F17350AM

Thu, 9/14 | 6:30 pm – 7:30 pm | Age 18+

Folk Remedies and Tinctures

Led by Hazel Shinholt & Nora Childers
Before pharmaceuticals, what did our ancestors do when they got sick? Tinctures – a method that used native plants to help those who were sick. Learn what a tincture is, which native plants can be used, and make your own tincture to take home.
Meets at Abbott's Mill
Mem \$5 | Non-mem \$10 | F17307AM

Wed, 9/13 | 5:30 pm – 7:30 pm | Age 21+

Mead: From Bee to Beverage

Led by Jim White
Mead is an alcoholic beverage created from honey. Learn how it's made and finish with a tasting of a refreshing selection of mead, which is believed to be the oldest alcoholic beverage.
Meets at Liquid Alchemy Beverages,
28 Brookside Drive, Wilmington
Mem \$20 | Non-mem \$30 | F17209DC

Fri, 9/15 | 8:30 am – 3 pm | Age 18+

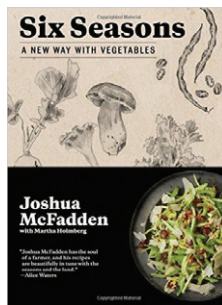
Serpentine Barrens Hike

Led by Joe Sebastiani & Janet Ebert
Hike the unusual Serpentine Barrens looking for migrant birds, rare wildflowers and grasses, and odd trees of this dry, rocky ecosystem. After lunch, enjoy a tour of the nearby Herr's Potato Chip Factory!
Bring a bag lunch.
Meets at Ashland
Mem \$20 | Non-mem \$30 | F17016AS

Sat, 9/16 | 5:30 pm – 7:30 pm | Age 18+

Peterson Refuge Plant Walk

Led by Janet Ebert
The Peterson Urban Refuge on the Wilmington Riverfront is a rare habitat, a freshwater tidal marsh, and many unique plants can be found there. Join a local botanist to stroll the boardwalk to see what we will find among the reeds.
Meets at DEEC
Mem \$10 | Non-mem \$15 | F17200DC



Thu, 9/21 | 6:30 pm – 9 pm | Age 21+

Cookbook Club: Six Seasons by Joshua McFadden

Led by Michele Wales
Chef Joshua McFadden channels both farmer and chef, highlighting the evolving attributes of vegetables throughout their growing seasons from the freshness of spring to the earthy, mellow sweetness of winter. His recipes celebrate flavor at its peak.
Meets at Coverdale
Mem \$60 | Non-mem \$70 | F17109CF

Sat, 9/23 | 9 am – 1:30 pm | Age 21+

Brandywine Trail: Sampling of Local Flavor

Led by Courtney McKinley
Hike in Delaware's First National Monument through scenic lands that have inspired artists, naturalists, and outdoor enthusiasts on the way to Penns Woods Winery. Here, enjoy a wine tasting, picnic, bread and cheese plate. 2-mile hike/van transport from Ashland.
Meets at Ashland
Mem \$30 | Non-mem \$45 | F17011AS

Tue, 9/26 | 6:30 pm – 8 pm | Age 21+

Basic Bike Maintenance 2 with Lifecycle

Led by Lifecycle staff
Learn bike maintenance basics from the pros. Campfire with s'mores and beer.
Meets at Abbott's Mill
Mem \$20 | Non-mem \$20 | F17351AM

Fri, 9/29 | 5:30 pm – 7 pm | Age 18+

Yappy Hour

Led by Courtney McKinley
Hike with your furry friend on Ashland's trails. Enjoy the early fall scenery and meet other dog lovers! Learn to identify trees from their "bark", a Dogwood from a Maple. End with treats for all in the Pavilion. Friendly, leashed dogs are welcome.
Meets at Ashland
Mem \$10 | Non-mem \$15 | F17009AS

Sat, 9/30 | 7:30 am – 5 pm | Age 18+

PSEG Wetlands Restoration Tour

Led by Jeff Pantazes & Hank Davis
Tour sites along the Delaware Bayshore of NJ with our board president Jeff Pantazes, who oversaw wetland restoration projects with PSEG. Learn about the restoration process and enjoy the birds now calling these preserves home.
Meets at Ashland
Mem \$25 | Non-mem \$37 | F17015AS

October

PRESCHOOLERS

Children must be accompanied by an adult, free of cost.

Fri, 10/20 | 9:30 am – 11 am | Age 2-5

Using Cool Tools: Drills

Led by Judy Montgomery

Learn about drills and drill bits.

Try using them! Create a shaker peg board to take home! Children must be accompanied by an adult, free of cost.

Meets at Ashland

Mem \$9 | Non-mem \$14 | F17037AS



Wed, 10/25 | 10 am – 11 am | Age 2-5

Le Petit Yogi

Led by Courtney Loughney

Roll down into a pumpkin pose and walk into downward facing dog! Children must be accompanied by an adult, free of cost.

Meets at Coverdale

Mem \$10 | Non-mem \$15 | F17137CF

JUST KIDS

Kids discover nature with our safety-certified instructors.



Monthly 10/1 – 8/10 | Times vary | Age 13-17

Teen Naturalists

Led by Courtney McKinley,

Trudyann Buckley, Steve Rombach, Brian Richardson & Hannah Greenberg

Are you a teenager that likes hiking, kayaking, camping, wildlife, and just being outside? Meet monthly and take a 5-day trip into the wild during summer.

Adventure, nature study, and volunteering 10 hours for Delaware Nature Society during the year are all part of the club. For information and the full schedule, call 302.239.2334 x115.

Meets at Ashland

Members only \$200 | F17051AS

Wed, 10/4, 10/11, 10/25, 11/8, 11/29, 12/6
7 pm – 9 pm | Age 11-15

Young Waterfowlers

Led by Jim Jordan of Brandywine Red Clay Alliance, John Campanelli of NWF, & Derek Stoner

Study wildlife management, habitat protection, and conservation practices during a comprehensive introduction to the American waterfowling heritage. Learn field identification of waterfowl, conservation ethics, safety skills, good sportsmanship and boat and water safety.

Meets at Ashland

Members only \$125 | F17052AS

Green by Nature Preschool Series

Join us for hands-on nature discovery outdoors with our professional team of Teacher Naturalists.

Age 2 – 5 | \$6 Member child, \$10 Non-member child per class

Locations alternate | Tuesdays, 9:30 am – 11 am

Parental participation required (free)

10/3	The Eyes Have It	Ashland	F17031AS
10/10	Autumn in the Marsh	DEEC	F17231DC
10/17	Fall on the Farm	Coverdale	F17133CF
10/24	Creepy Creatures	Ashland	F17032AS
10/31	The Very Busy Spider	DEEC	F17232DC

Get full schedule, program descriptions, and register:
DelNature.org/Preschool | 302.239.2334

Knee-high Naturalists Series

Join us for hands-on nature discovery outdoors with our professional team of Teacher Naturalists.

Age 2 – 5 | \$4 Member child, \$7 Non-member child per class

Abbott's Mill Nature Center | Wednesdays, 9:30 am – 11 am

Parental participation required (free)

10/4	We All Fall Down	F17335AM
10/11	Leaves Leave	F17336AM
10/18	Talk to the Animals	F17337AM
10/25	Monsters! Monsters?	F17338AM

Get full schedule, program descriptions, and register:
DelNature.org/Preschool | 302.239.2334

JUST KIDS (CONTINUED)

Kids discover nature with our safety-certified instructors.

Wed, 10/4, 10/11, 10/25, 11/8, 11/29, 12/6
7 pm – 9 pm | Age 13-17

Advanced Young Waterfowlers

Led by Jim Jordan of Brandywine Red Clay Alliance, John Campanelli of NWF, & Derek Stoner

For alumnae of previous Young Waterfowler programs. Training in blind preparation, decoy setup, duck and goose calling, and firearm safety. Learn from champion waterfowl callers. Participate in conservation-focused projects. Experience Canada Goose hunting at private farms.
Meets at Ashland
Members only \$125 | F17053AS

Fri, 10/13 | 6 pm – 8 pm | Age 5-12

Parent's Night Out: Friday the 13th Myth Busters

Led by DEEC Staff
Do dragonflies bite? Do bats fly into your hair? Bust these and other nature myths as mom and dad are free to have dinner along Wilmington's Riverfront while you stay at DEEC having lots of fun. Dinner provided. Parents receive a coupon for Timothy's Riverfront Grill.
Meets at DEEC
Mem \$15 | Non-mem \$20 | F17250DC



Support us with Ranger Rick Magazines by National Wildlife Federation

Fun, age-appropriate stories, puzzles, and wildlife facts! Magazines for ages 0-4, 4-7, and 7+

Buy yours at the below link and a portion of your subscription price will support Delaware Nature Society

NWF.org/DelNaturekidsgift

FAMILY FUN

Enjoy hands-on nature experiences together.
Children must be accompanied by an adult.

Sun, 10/1 | 9 am – 11:30 am | Age 8+

Family Fall Canoe

Led by DEEC staff
Improve your paddling skills while taking in the beautiful Riverfront View. Discover how to prepare for a paddle. Travel down the river learning techniques as you go. Watch for herons, beavers, bald eagles and more.
Meets at DEEC
Mem \$15 | Non-mem \$20 | F17265DC

Sat, 10/14 | 3 pm – 6 pm | All Ages

Flint Woods Family Hike

Led by Tracy Lea Dorsey
Take a walk through an amazing forest with huge trees, a bubbling creek, and lots of wildlife. Complete a scavenger hunt along the way, and at the end, enjoy a home-cooked picnic and campfire.
Meets at Ashland
Mem \$12 | Non-mem \$18 | F17075FW

Sat, 10/14 | 3 pm – 5 pm | Age 10+

Archery for Families

Led by Rob Yacucci
Test your skills with bow and arrow as we take on challenging targets at Ashland. Learn how Native Americans depended upon archery for survival. Who in your family is best at hitting the bullseye!
All equipment provided.
Meets at Ashland
Mem \$10 | Non-mem \$15 | F17065AS

Sun, 10/15 | 10 am – 3 pm | Age 7+

Family Fossiling

Led by Heather Siple
Search for and gather Cretaceous era fossils – over 72 million years old found along the C & D Canal near Delaware City. Van or carpool from Ashland.
Meets at Ashland
Mem \$12 | Non-mem \$18 | F17066AS

Sun, 10/15 | 9 am – 11:30 am | Age 6+

Chores and Breakfast

Led by Ashley Harrell
Wake up with the roosters! Feed and care for our livestock, then head to the farm kitchen to make a hearty farm breakfast!
Meets at Coverdale
Mem \$12 | Non-mem \$16 | F17161CF

Fri, 10/20 | 7:30 pm – 9:30 pm | All Ages

Nighttime Hayride and Nocturnal Wildlife Watch

Led by Jim White
Coverdale Farm Preserve is home to many nocturnal animals, from raccoons to owls to fox. Join us on an after hours adventure to observe the farm's nightlife. Registration required.
Meets at Coverdale
Mem FREE | Non-mem \$14 | F17162CF

Sat, 10/21 | 12 pm – 4 pm | All Ages

Family Fall Fun at Abbott's

Led by Abbott's Staff
Carve pumpkins, enjoy a hayride, roast s'mores, get your face painted, tour Abbott's Mill in action, and warm up with the A'Latte Soul coffee truck at Abbott's.
Meets at Abbott's Mill
Mem \$5 | Non-mem \$7 | F17366AM

October

FAMILY FUN (CONTINUED)

Enjoy hands-on nature experiences together.
Children must be accompanied by an adult.



Sat, 10/21 | 3 pm – 5 pm | Age 5+

Monster 3-D

Led by Alison Altergott
Study live snakes, spiders, and lizards to make your own 3-D Monster for Halloween fun! No special skills required! Please register one participant – includes all members of a single household.

Meets at Ashland
Mem \$10/household
Non-mem \$15/household | F17077AS

Sun, 10/22 | 1 pm – 3 pm | Age 5+

Nature's Top Chef: Apples and Nuts

Led by Judy Montgomery
Visit our forest and search for beech nuts, hickory, walnuts and acorns. Check out an apple tree. Create a nutty treat to share using apples, nuts and mystery ingredients. Bring a teammate!

Meets at Ashland Lodge
Mem \$9 | Non-mem \$14 | F17078AS

Sun, 10/27 | 6:30 pm – 8:30 pm | Age 6+

Spooky Marsh

Led by DEEC staff
Join us for a nocturnal adventure. Listen for and learn about night time wildlife. Walk through the garden and boardwalk and test your courage.

Meet in the parking lot.
Meets at DEEC
Mem \$8 | Non-mem \$14 | F17266DC

Sat, 10/28 | 1 pm – 3 pm | Age 7+

Foraging Foray

Led by Heather Siple
Discover the bounty of the wild woods and fields of Ashland. Learn to identify edible wild plants and how to harvest them safely. Bring some back to the kitchen to make a tasty treat.

Meets at Ashland
Mem \$15 | Non-mem \$20 | F17076AS

Sun, 10/29 | 2 pm – 5 pm | All Ages

Introduction to Waterfowling

Led by Abbott's Mill staff & Exhibitors
Come for fun family activities and discover the conservation-based tradition of waterfowling. Learn to blow a duck call, work with a retrieving dog, and carve a decoy. Waterfowl-focused organizations will help guide you through activities.

Meets at Abbott's Mill
FREE for everyone | Just show up!

Sun, 10/29 | 8 pm – 10 pm | All Ages

Story of the Stars!

Led by Sheila Vincent & Rob Wiest
Take an incredible astronomical journey that will leave you star-struck! The night skies over Coverdale are full of wonder and mystery. Registration required.

Meets at Coverdale
Mem FREE | Non-mem \$6 | F17163CF

Sun, 10/29 | 9 am – 11 am | All Ages

Free Family Nature Walk: Fantastic Fall Family Hike

Led by Dawn Coughlan & Lifecycle staff
Bring the family to explore the trails and wildlife of the Bucktoe Creek Preserve under the autumn leaves with a Naturalist. Program is sponsored by a private donor.

Registration required.
Meets at Bucktoe
FREE for everyone | V17661BK

ALL AGES

Adults or adults with children are welcome. Parents must accompany children.



Drop by for Recurring Programs

These programs happen weekly or daily. No registration required.

See pages 8 – 11
for ongoing drop-in
programs at our main
locations.

Ongoing drop-in
programs at our other
locations:

Bird Banding

Wednesdays thru Nov
8 am, FREE
Meets at Bucktoe

Bird Walks

Tuesdays, Sep – Oct
8 am – 10 am, FREE
Meets at Middle Run

Thursdays, Sep – Oct
8 am – 10 am
Mem: FREE, Non-mem: \$10
Meets at Flint Woods

Sundays, Sep – Nov
8 am – 11 am, FREE
Meets at Bucktoe

ADULTS

Sun, 10/1 | 8 am – 11 am | Age 18+

Howard Brokaw Memorial Bird Walk

Led by Joe Sebastiani & Larry Lewis
Howard Brokaw, former President of Delaware Nature Society (1973 – 1981), was a lifelong accomplished Conservationist and devoted birder. Join us on a walking and birding tour of Bucktoe Creek Preserve to honor his efforts toward conservation. Just show up!
Meets at Bucktoe
FREE for everyone | Just show up!

Wed, 10/4 | 12:30 pm – 4:30 pm | Age 18+

Historic Brandywine Ramble

Led by Sally O'Byrne
Take a hike along the Brandywine River. Begin at Breck's Mill then hike through urban parklands, on to the Schoonover gallery and the Howard Pyle Studios. Enjoy wine and cheese on a Victorian porch. Walk is 3.5 miles.
Meets at Breck's Mill Parking Lot next to Montchanin Post Office
Mem \$20 | Non-mem \$30 | F17208DC

Thursdays in Oct | 5:30 pm – 6:30 pm | Age 18+

Farm Yoga

Led by Tracy Lea-Dorsey
Celebrate the end of day with a truly organic experience. Every level welcomed for this Gentle Vinyasa. Bring a mat, water bottle, comfortable clothing. Avoid heavy meals 30 minutes prior.
Meets at Coverdale
Mem \$10 | Non-mem \$15
Thu, 10/5: F17103CF
Thu, 10/12: F17104CF
Thu, 10/19: F17105CF
Thu, 10/26: F17106CF



Sat, 10/7 | 12:30 pm – 3:30 pm | Age 18+

Canoeing the Christina River and Marshes

Led by Ed Rohrbach & Mary Boeni
Explore the Christina River and its marshes. Watch for herons, ducks, beavers and more in the freshwater tidal wetlands.
Meets at DEEC
Mem \$15 | Non-mem \$20 | F17203DC

Sun, 10/8 | 8 am – 5 pm | Age 18+

The Cypress Swamps of Southern Delaware

Led by Matt Babbitt & John Harrod
Explore the Cypress Swamps of Southern Delaware. Canoe into the headwaters of Trap Pond and then muck around Delaware Wild Land's Great Cypress Swamp Preserves by boot. Pack a bagged lunch and water bottle. Van transportation provided from 2 different locations:

Depart from Abbott's

Depart 8 am, return 5 pm
Mem \$30 | Non-mem \$50 | F17302AM

Depart from DEEC

Depart 7 am, return 6 pm
Mem \$30 | Non-mem \$50 | F17303DC



The Cypress Swamps of Southern Delaware

October

ADULTS (CONTINUED)



Hike Middle Creek Wildlife Area

Fri, 10/20 | 9 am – 4 pm | Age 18+

Big Tree and History Tour of New Castle County

Led by Joe Sebastiani & Aaron Ferguson
Tour northern New Castle County to see some of the biggest trees of their kind in Delaware, and hear about local history at the properties we will visit. Learn how to measure a “Champion” tree. Walk some of the area’s most beautiful and historic sites.

Receive a free copy of the book
The Big Trees of Delaware.

Van transportation provided.

Meets at Ashland

Mem \$20 | Non-mem \$30 | F17003AS

Sun, 10/22 | 1 pm – 3 pm | Age 21+

DIY Workshop: Vegetable Fermentation

Led by David Lorom

Transform raw veggies into fermented delights using the bounty of our farm’s gardens. Harness the bio-processing power of bacteria to bring out tangy flavors or a sharp crunch!

Materials and veggies included.

Meets at Coverdale

Mem \$20 | Non-mem \$26 | F17101CF

Fri, 10/13 | 5 pm – 7:30 pm | Age 21+

Hike and Brew Tour: Dewpoint Brewery

Led by Courtney McKinley

Hike from Ashland to Yorklyn’s new Dew Point Brewery and learn about the history and environmental challenges of this important waterway. Meet the Brewer; enjoy a sampling of locally crafted in season brews. Van transportation back to Ashland provided. Total hike is 1 mile.

Meets at Ashland

Mem \$20 | Non-mem \$30 | F17010AS

Thu, 10/19 | 5:30 pm – 7:30 pm | Age 18+

Paint and Sip: The Scream

Led by Kennett Design

Marvel at the autumn landscape while enjoying wine and painting a 16”x20” canvas of “The Scream”.

Event sponsored by Kennett Design with a Splash of Wine. No experience necessary. Cost includes 2 glasses of wine, all instruction and materials.

Meets at DEEC

Mem \$39 | Non-mem \$39

Pre-registration is required through
Kennett Design: 610.444.4400 or
KDPaintParty.com/calendar/



Paint and Sip

ADULTS (CONTINUED)

Sat, 10/21 | 7 am – 4 pm | Age 18+

Hike Middle Creek Wildlife Area

Led by Steve Rombach
 Hike in the Highlands region of the PA Piedmont at Middle Creek Wildlife Area in Lancaster County and enjoy the overlooks and old ruins. Afterwards visit the PA Game Commission's visitor center to look for waterfowl. Strenuous 8-mile hike with 1,000+ ft of elevation gain.
 Meets at Ashland
 Mem \$30 | Non-mem \$45 | F17014AS



Thu, 10/26 | 12:30 pm – 5 pm | Age 18+

Ashland to Bucktoe Creek Preserve Hike

Led by Joe Sebastiani
 Cross private and public lands with meadows and woods during the fall foliage season. Learn about nature and local history along the way. The 6-mile hike is hilly and strenuous with some bushwhacking in places. Limited road walking. Return van transportation from Bucktoe Creek Preserve.
 Meets at Ashland
 Mem \$20 | Non-mem \$30 | F17007BK

Fri, 10/27 | 12 pm – 4:30 pm | Age 18+

Flint Woods to Granogue Hike and Lunch

Led by Joe Sebastiani & Michele Wales
 Enjoy this classic hike through the old-growth forests of Flint Woods. End at the famous Granogue Estate atop a stone water tower for one of the best views in the Diamond State. This strenuous 3-mile hike begins with a gourmet lunch and ends with a scrumptious dessert.
 Meets at Flint Woods Preserve
 Mem \$30 | Non-mem \$45 | F17005FW

Tue, 10/24 | 12:30 pm – 4:30 pm | Age 18+

Hoopes Reservoir Hike

Led by Joe Sebastiani & Sally O'Byrne
 Closed to the public for 45+ years, Hoopes Reservoir remains a beautiful, mysterious natural gem. Enjoy this opportunity to hike the eastern side. Learn about its history while looking for waterfowl, eagles, and interesting plants. Strenuous, 3-mile hike with some bushwhacking.
 Meets at Ashland
 Mem \$20 | Non-mem \$30 | F17008AS

Sat, 10/28 | 7:30 am – 5:30 pm | Age 18+

Appalachian Mountain Hawk Migration

Led by Joe Sebastiani & Mike Gardner
 Travel to Waggoner's Gap Hawk Watch in the Appalachian Mountains to view fall foliage, mountain-top scenery, and possibly rare raptors such as Golden Eagle and Northern Goshawk. Visit other birding locations in Cumberland County, PA.
 Meets at Ashland
 Mem \$30 | Non-mem \$45 | F17012AS

Copeland Native Plant Seminar

Sustainable Gardens

Sat Apr 7, 2018, 9 am – 2:30 pm

Ashland Nature Center, Hockessin, DE
 Mem: \$50, Non-mem: \$65

Join nationally recognized landscape designer Heather Holm and garden writer Barbara Ellis for a morning of inspiration followed by an afternoon of garden tours and a container garden craft.

Co-sponsored by Delaware Nature Society and Mt. Cuba Center

Learn more

DelNature.org/CopelandSeminar



Young Waterfowlers

Connecting The Next Generation to the Outdoors

By Derek Stoner

Eyes squinting into the bright sunrise and the cold December air, two teenagers peer above the tall brown grasses and look across the scene before them: an expansive wetland, full of chattering ducks, honking geese and soaring Bald Eagles. The entire Bear Swamp impoundment at the legendary Bombay Hook National Wildlife Refuge is full of life and awakening at sunrise. Their parents beside them, these young adults are full of anticipation as they prepare for their first-ever waterfowl hunt.

In these days of smartphones and digital life keeping us tied to screens indoors, one of the best shows on Earth is watched each year by a special group of people. These are the Young Waterfowlers, a group of youth who connect deeply to the outdoors and continue a grand American tradition.

Delaware Nature Society's Young Waterfowlers program is a comprehensive curriculum that introduces youth to waterfowling through a broad array of topics such as wildlife management, wetland enhancement, waterfowl identification, and hunting ethics. For the past two decades, the program has evolved and expanded to keep up with modern changes in the world while still keeping with the traditions of the waterfowling lifestyle.



Photography by Derek Stoner

Every fall, students and their parents gather at Ashland Nature Center for the series of seven weeknight Young Waterfowlers classes. A team of volunteer instructors from the community, with more than 200 combined years of waterfowling under their wader belts, lead the students through hands-on activities that are fun and exciting. Youngsters test their skills by blowing a goose call, carving a cork duck decoy, and training a retrieving dog. The State of Delaware's Hunter Education course is taught in conjunction with the class, and students may choose to receive their hunter safety certification upon completion of the class.

The Young Waterfowlers program successfully brings together a large group of young men and women (ages 10 to 16) each season, and many return year after year to be part of the Advanced Young Waterfowlers. Many graduates of the program return to the class to help out as assistant instructors. Delaware Nature Society shares the leadership of the program with the Brandywine Red Clay Alliance, an environmental organization based in Unionville, PA, that is dedicated to environmental education and watershed conservation.

"The partnership between Delaware Nature Society and Brandywine Red Clay Alliance (BRC) is one of the reasons for the long-standing success of the Young Waterfowlers program" says Jim Jordan, Executive Director of the BRC. "The partnership enables us to offer the program to a much broader audience, in addition to attracting instructors who have a vast amount of knowledge and expertise in different disciplines."

Chris Buccini, a DelNature member and active local businessman, joined his two sons as participants in the program for the first time during the fall 2016 class. He says, "the program brought us together to work toward a goal – getting out to enjoy waterfowl hunting together as a family. We invested our time in the program and built a foundation for a lifelong activity."

Field trips on Sundays help the students prepare for the waterfowl season. A visit to the Ommelanden Range in New Castle is when

participants test their skills with shotgun shooting under the tutelage of certified instructors. Jim Jordan and John Campanelli, founders of the Young Waterfowlers program, bring decades of safe shooting instruction to help youngsters master the skill of breaking a clay target.

A trip to the Bombay Hook refuge to gather grasses and camouflage the hunting blinds provides lessons in mastering the art of concealment. The Waterfowl Identification field trip takes the Young Waterfowlers families on a tour of the Delaware Bayshore from Delaware City all the way down to Bombay Hook, with stops at natural areas to scan wetlands with a spotting scope. The excitement of seeing a wide variety of ducks, geese, and swans is amplified by the additional sightings of wildlife like deer, foxes, and even a close encounter with a Snowy Owl one year. Chris Buccini notes that the trips are "really educational and an excellent introduction to the topics of conservation, habitat management, and wildlife identification."

And so we return to Bombay Hook where we started our story:

An entire Fall season of classes and field trips prepared them for this day – both a graduation and initiation into the world of waterfowling. A flock of Green-winged Teal banks hard to the right of the blind and powers into the North wind. A Black Duck quacks loudly nearby, as the decoys bob gently in the water. Smiles flash as the youngsters prepare for the arrival of waterfowl joined by their guide, with their parents watching over their shoulders. Two generations together outdoors, connected by the tradition of waterfowling.

Derek Stoner serves as a volunteer leader for the Young Waterfowlers program, after a fifteen-year career on staff with Delaware Nature Society. He is a published author and photographer for many conservation-focused publications.

November

PRESCHOOLERS

Children must be accompanied by an adult, free of cost.

Fri, 11/17 | 9:30 am – 11 am | Age 2-5

Using Cool Tools: Rakes and Pails

Led by Rob Wiest

Use shovels, scales, and rakes to help our farmers ready the gardens for winter and care for the animals!

Meets at Coverdale

Mem \$9 | Non-mem \$14 | F17138CF

Knee-high Naturalists

Age 2 – 5 | \$4 Mem, \$7 Non-mem/class
Abbott's Mill Nature Center
Wednesdays, 9:30 am – 11 am
Parental participation required (free)

11/1	Oh Deer!	F17339AM
11/8	You Turkey!	F17340AM
11/15	Little Lenape	F17341AM

Full schedule, descriptions, register:
DelNature.org/Preschool 302.239.2334

Green by Nature Preschool

Age 2 – 5 | \$6 Mem, \$10 Non-mem/class
Locations alternate
Tuesdays, 9:30 am – 11 am
Parental participation required (free)

11/7	Hair, Fur, Feathers, and Wool	Coverdale	F17134CF
11/14	Turkey Time	Ashland	F17033AS
11/21	Grateful for Nature	DEEC	F17233DC
11/28	Thanks to the Farmers	Coverdale	F17135CF

Full schedule, descriptions, register:
DelNature.org/Preschool 302.239.2334

FAMILY FUN

Enjoy hands-on nature experiences together.
Children must be accompanied by an adult.

Sun, 11/12 | 6 pm – 7:30 pm | All Ages

Family Nature Walk: Owl Prowl

Led by Dawn Coughlan

Bring the family to explore the trails and wildlife of Bucktoe Creek Preserve.

Registration required.

Meets at Bucktoe Creek Preserve

FREE for everyone | V17662BK

Sun, 11/12 | 2 pm – 4 pm | Age 6+

Gourd Birdhouse Workshop

Led by Rob Wiest

Start your own B&B for feathered friends! Learn about the native birds that stay around during the winter months. Then create a gourd-gous bird house, wooly nesting ball and a treat for your guests!

Meets at Coverdale

Mem \$7 | Non-mem \$10 | F17168CF

Sat, 11/18 | 1 pm – 4 pm | All Ages

Holiday Printmaking for Families

Led by Alison Altergott & Jessica Barber
Join us for some creativity using fun printmaking processes. Design gift tags, bags, boxes, wrapping paper, and cards--just in time for the holidays! Collect natural items to enhance your projects. Learn fabulous techniques that you'll use again!

Meets at Ashland

Mem \$20 | Non-mem \$30 | F17070AS

Sat, 11/18 | 5 pm – 8 pm | Age 6+

Creative Thanksgiving Side Dishes

Led by Rob Wiest & Ashley Harrell
Looking to spice up your Thanksgiving meal? Create and taste familiar recipes with a local flair!

Meets at Coverdale

Mem \$8 | Non-mem \$13 | F17167CF

Sun, 11/19 | 1 pm – 3 pm | Age 5+

Nature's Top Chef: a-Maize-ing Corn

Led by Judy Montgomery

Bring a partner and learn all about corn. How it grows, the varieties, and their plant parts. Play a corny game then uncover your mystery ingredients and create a tasty Thanksgiving treat.

Meets at Ashland Lodge

Mem \$9 | Non-mem \$14 | F17079AS

Wed, 11/22 | 10 am – 12 pm | All Ages

Talkin' Turkey

Led by Judy Montgomery

Who's the best gobbler in your family? Practice your turkey calls while we make a turkey centerpiece from natural items, and turkey shaped cookies!

Meets at Ashland

Mem \$9 | Non-mem \$14 | F17071AS



ALL AGES

Adults or adults with children are welcome. Parents must accompany children.

Drop by for Recurring Programs

These programs happen weekly or daily. No registration required.

See pages 8 – 11
for ongoing drop-in
programs at our main
locations.

Ongoing drop-in
programs at our other
locations:

Bird Banding

Wednesdays thru Nov
8 am, FREE
Meets at Bucktoe

Bird Walks

Sundays, Sep – Nov
8 am – 11 am, FREE
Meets at Bucktoe

ADULTS



Coverdale Farm to Ashland Loop Hike

Tuesdays in Nov | 5:30 pm – 6:30 pm | Age 18+

Riverfront Yoga

Led by Tracy Lea-Dorsey
Join us at the riverfront and embrace the peaceful surroundings by practicing a gentle vinyasa yoga flow for all levels. Bring a mat, water bottle, wear comfortable form fitting clothes. Avoid a heavy meal 30 minutes prior.

Meets at DEEC
Mem \$10 | Non-mem \$15
Tue, 11/7: F17202DC
Tue, 11/14: F17204DC
Tue, 11/21: F17205DC
Tue, 11/28: F17206DC

Sun, 11/12 | 1 pm – 5 pm | Age 18+

Coverdale Farm to Ashland Loop Hike

Led by Brian Winslow
This exclusive hike takes you through Coverdale Farm Preserve, private property, Red Clay Reservation, and Ashland Nature Center. Learn about the conservation of land and ecological management while hiking these scenic rolling hillsides. This 4-mile hike is strenuous, and expect a wet-foot stream crossing.
Meets at Coverdale
Mem \$20 | Non-mem \$30 | F17002CF

Thu, 11/16 | 5:30 pm – 6:30 pm | Age 18+

Farm Yoga

Led by Tracy Lea-Dorsey
Celebrate the end of day with a truly organic experience. Every level welcomed for this Gentle Vinyasa. Bring a mat, water bottle, comfortable clothing. Avoid heavy meals 30 minutes prior.

Meets at Coverdale
Mem \$10 | Non-mem \$15 | F17107CF

Fri, 11/17 | 1 pm – 4:30 pm | Age 18+

Calpine Energy Plant Tour

Led by Sally O'Byrne
What do you know about the creation of energy? Tour the Calpine plant on the Delaware River. Learn the basics of generation from fuel to transmission. Learn what Calpine does to promote energy sustainability and efficiency. Dress for the weather as a portion is outdoors.
Van transportation provided.

Meets at Ashland
Mem \$15 | Non-mem \$22 | F17019AS

December

PRESCHOOLERS

Children must be accompanied by an adult, free of cost.



Fri, 12/1 | 9:30 am – 11 am | Age 2-5

Using Cool Tools: Screwdrivers

Led by Judy Montgomery
Try a variety of screwdrivers and create a tool box to hold your tools!

Meets at Ashland

Mem \$9 | Non-mem \$14 | F17038AS

Fri, 12/8 | 9:30 am – 11 am | Age 2-5

Using Cool Tools: Fishing Poles

Led by Lesley Bensinger
What is the most important tool to use in a river? A fishing pole of course! Craft your own pole with bamboo and string. Use a magnet instead of a hook and create your own fish to take home. Parent participation required at no additional charge.

Meets at DEEC

Mem \$9 | Non-mem \$14 | F17235DC

Green by Nature Preschool

Age 2 – 5 | \$6 Mem, \$10 Non-mem/class
Locations alternate

Tuesdays, 9:30 am – 11 am

Parental participation required (free)

12/5 Night Owls Ashland F17034AS

12/12 Our 5 Senses DEEC F17234DC

Full schedule, descriptions, register:
DelNature.org/Preschool 302.239.2334

FAMILY FUN

Enjoy hands-on nature experiences together. Children must be accompanied by an adult.



Sun, 12/10 | 1 pm – 3 pm | All Ages

Gingerbread House for Birds

Led by Ashland staff
Get ready for National Gingerbread House Day! (Dec. 12) Get an assembled house and all of the fixin's to create a beautiful house for your backyard birds! And enjoy a crackling fire and refreshments!

Meets at Ashland

Mem \$15 | Non-mem \$25 | F17072AS

Wed, 12/13 | 7 pm – 9 pm | Age 12+

Stories of the Night Sky

Led by Sally O'Bryne
The Geminid meteor shower is known for its bright, fast meteors from the far reaches of the solar system. Enjoy a warm fire and hot cider while our storyteller takes you on a journey through time. Then explore the skies with astronomer Sheila Vincent.

Meets at Ashland Lodge

Mem \$8 | Non-mem \$14 | F17073AS

Sat, 12/16 | 7 pm – 9 pm | All Ages

Family Barn Dance

Led by Experienced Contra Caller
Kick your heels and swing your partner on this night of bluegrass music and family dancing! Celebrate another farmtastic Coverdale year in a night of stomps and twirls made for first-timers and experts alike!

Meets at Coverdale

Mem \$9 | Non-mem \$13 | F17170CF

ADULTS

Tue, 12/5 | 5:30 pm – 6:30 pm | Age 18+

Riverfront Yoga

Led by Tracy Lea-Dorsey
Join us at the riverfront and embrace the peaceful surroundings by practicing a gentle vinyasa yoga flow for all levels. Bring a mat, water bottle, wear comfortable form fitting clothes. Avoid heavy meals 30 minutes prior.

Meets at DEEC

Mem \$10 | Non-mem \$15 | F17207DC

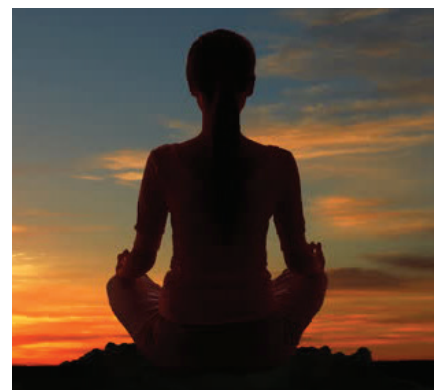
Sat, 12/9 | 1 pm – 4 pm | Age 18+

DIY Workshop: Soap-making

Led by David Lorom
In true homesteader fashion, make soap from ingredients you can find in your home! Get your hands wet making the basic formula, then harvest botanicals from the farm to add your own personal touch.

Meets at Coverdale

Mem \$20 | Non-mem \$26 | F17102CF



Thu, 12/21 | 5:30 pm – 6:30 pm | Age 18+

Farm Yoga

Led by Tracy Lea-Dorsey
Celebrate the end of day with a truly organic experience. Every level welcomed for this Gentle Vinyasa. Bring a mat, water bottle, comfortable clothing. Avoid heavy meals 30 minutes prior.

Meets at Coverdale

Mem \$10 | Non-mem \$15 | F17108CF

Peter Flint Receives Lifetime Achievement Award

This year at our Annual Meeting, Peter Flint was awarded with Delaware Nature Society's Lifetime Achievement Award. This is our most prestigious award and Peter Flint is the eighth person to be recognized in our 53 year history. Past recipients of the award include Howard Brokaw, Russell Peterson, Norm Wilder, Winston Wayne, Darwin Palmer, Lynn Williams, and Lorraine Fleming.

Peter has made a difference in the local, national and international community by recognizing the importance of conservation, education, and advocacy for the natural world. His commitment to these causes are demonstrated through his work with environmental groups including Delaware Nature Society and Rare, an international conservation organization.

With his wife Karen at his side, Peter led Delaware Nature Society as board chairman for 14 years during a time of tremendous growth and through an executive director transition. He served on many board committees including the conservancy, finance, governance, and executive. He has modeled his commitment to the environment in many ways including putting easements on his own property and

managing that land using best conservation practices, which has increased the diversity of flora and fauna. He and his family also donated Flint Woods Preserve to Delaware Nature Society to protect the natural resources in perpetuity. As the largest remaining old growth hardwood forest in Delaware, Flint Woods provides a unique environment for education programs and exclusive hikes.



Peter is a leader who understands the impact of his decisions. His generosity of time and wisdom over many decades has made a difference in the growth of our organization. We are also pleased that Peter's impact with Delaware Nature Society will continue as he has joined our honorary board.

Welcome to our newest class of board members voted in at the Annual Meeting this year.

Steve Allen, Vice President of First Data Corporation; Sally Feeley, North American Project Manager at DuPont; Jim Seif, Retired Lawyer and Consultant; and Marian Young, President at BrightFields, Inc.

Pictured here: Peter and Karen at the dedication of the Flint Woods pavilion in June 2017.

Intend to Leave the World a Better Place?

Plan your Legacy with Delaware Nature Society!

When you include us in your Estate Plans or Will, you can trust that you are leaving a lasting gift to preserve and protect land, natural resources and wildlife through our conservation and advocacy efforts, while inspiring future generations through our education programs.

What better legacy can you imagine?

For more information on how to make a planned gift and join our **Monarch Legacy Society**, please contact:

Joanne McGeoch, Director of Development & Marketing,
302.239.2334 x 103, JMcGeoch@DelNature.org.

Eco tours

FOR MEMBERS ONLY - JOIN TODAY AT
DelNature.org/BecomeAMember

Please visit DelNature.org/EcoTours for details and itinerary.
To register, call 302.239.2334.



Mon, Sep. 25, 2017 – Fri, Sep. 29, 2017

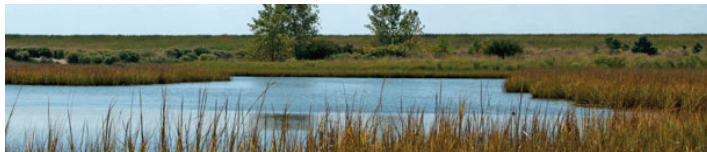
Chicago's Botanic Gardens, Birding, and Architecture

Led by Joe Sebastiani and Andrew Bunting, Chicago Botanic Garden Assistant Director and Director of Plant Collections

See the best of Chicago's gardens and birding. Full day at Chicago Botanic Garden – 385 acres on nine islands, six miles of shoreline. Visit the 1,700-acre Morton Arboretum and view their collection of a quarter-of-a-million specimen plants.

Deposit to secure spot: \$500

Price: \$1,200 (double occ) | Single supplement: \$499



Mon, Oct. 2, 2017 – Tue, Oct. 3, 2017

Poplar Island and Blackwater Overnight

Led by Ginger North and Matt Babbitt

Tour Maryland's Eastern Shore and Chesapeake Bay. Visit the Blackwater National Wildlife Refuge, the "Everglades of Delmarva", to look for migratory waterfowl and Delmarva Fox Squirrels. Learn about the area's heritage at the Harriet Tubman Underground Railroad National Historic Park and Poplar Island which is being re-built to create a wildlife paradise.

Price: \$210 (double occ) | Single supplement: \$75



Thu, Nov 2, 2017 – Sat, Nov 11, 2017

Trinidad and Tobago Wildlife and Birds

Led by Judy Montgomery, Seasonal Program Coordinator

Discover birding in the tropics at the two-island nation of Trinidad and Tobago. Easily-accessible habitats of some of the world's most beautiful birds. Includes world-famous Asa Wright Nature Centre in 2,000 acres of rainforest. Price doesn't include airfare between your home and Port of Spain, Trinidad.

Deposit to secure spot: \$500

Price: \$2,850 (double occ) | Single supplement: \$420



Sun, Apr 15, 2018 – Fri, Apr 20, 2018

Texas Hill Country Spring Getaway

Led by John Harrod and Joe Sebastiani

Discover the Edwards Plateau region, a land of gorgeous rolling hills and steep water-carved canyons, known for its spring profusion of wildflowers, diversity of wildlife, and rare birds. Visit natural areas such as Pedernales Falls Lost Maples Natural Area. and the convergence of the desert, tropics, and eastern forests.

Deposit to secure spot: \$250

Price: \$1,800 (double occ)



Thu, Jun 21, 2018 – Wed, Jul 4, 2018

The Plains of Africa

Led by Brian Winslow, Executive Director

Explore the scenic vistas, magnificent wildlife, thriving culture, and natural wonders of Kenya. Safari game drives to see lions, elephants, buffalo, leopards, rhinos. Visit Rothschild Giraffe Sanctuary.

Deposit to secure spot: \$500

Price: \$6,899 (double occ), \$7,349 (single occ)

Register by 11/22 & \$200 off



Sat, Apr 28, 2018 – Mon, Apr 30, 2018

Chesapeake Bay Excursion: Living Life by the Tides

Led by Jim White, Matt Babbitt, and Chesapeake Bay Foundation Staff

Travel to the Karen Noonan Center, a sustainably renovated hunting lodge at Tangier Sound. By boat try crabbing, oyster dredging, and enjoy birding.

\$425/person



Wed, May 23, 2018 – Wed, 30, 2018

Yellowstone and Montana

with an extension to Glacier National Park

Led by Forrest Rowland, Rockjumper Birding Tours, and Joe Sebastiani

Enjoy birding, wildlife, and scenery of the prairies and mountain tops of the Rocky Mountains. Witness the gushing geysers and scenery of Yellowstone National Park.

Call 302.239.2334 for pricing.



water, wildlife, and land **HELP WILDLIFE & OUR COMMUNITIES THRIVE**



Our 2017 Agenda **Delaware Nature Society is advocating for...**

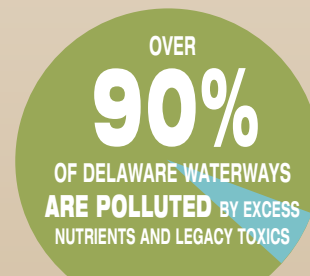
supporting clean **WATER**

1. Dedicated clean water funding
2. Protection of our waterways
3. Preservation of our freshwater wetlands
4. Enact Recovering America's Wildlife Act
5. Protect Menhaden: key food for many ocean creatures
6. Full funding for federal programs such as the Land and Water Conservation Fund
7. Reform the Ethanol Mandate
8. Full funding for Delaware's Open Space and Farmland Preservation Programs

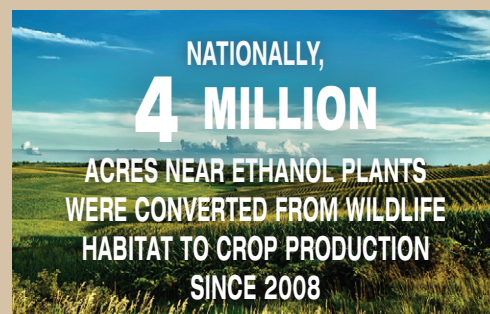
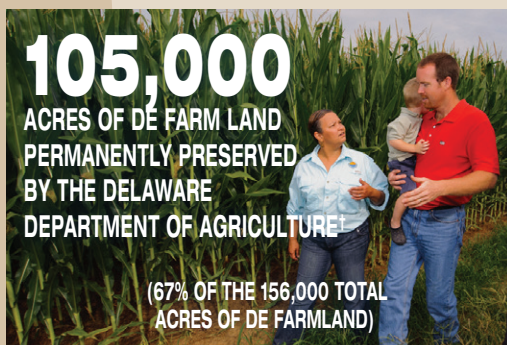
protecting **WILDLIFE**

preserving **OPEN SPACE**

FOR WILDLIFE AND THE HEALTH OF OUR COMMUNITIES



DELAWARE'S
OPEN SPACES
PROGRAM PROTECTS
57,000
ACRES OF PUBLIC LAND*



learn more: **DELNATURE.ORG/ADVOCACY**

Volunteer Highlight

Dan Barbato

By Elinor Knodel

An early love of nature led Dan Barbato on a journey in environmental stewardship that he might not have predicted. Dan grew up in the Red Clay Valley near the creek, playing in streams, and fishing. Fast forward to Dan, a licensed professional (civil) engineer, looking for an opportunity to volunteer in the community. He knew he wanted to do something with streams, so when he discovered the Steam Watch program on Delaware Nature Society's website, it was a natural fit. Dan monitored two sites faithfully for five years, eventually accompanied by his two young sons. Over time, they noticed that the water quality gradually improved, due to environmental cleanup efforts and better land management practices upstream.

Dan heard that Delaware Nature Society was looking for volunteers to help with monitoring conservation easements in New Castle County. These legal agreements preserve a property's natural value by limiting development and complying with conservation practices, like not cutting trees and protecting streams from runoff and erosion. Dan participated in yearly inspections of easement properties that proved beneficial both for the program and his own personal enjoyment. Says Dan, "I got to play in streams in the woods as a kid, and now as a volunteer, I still got to play in the water and to walk through all kinds of great properties with really old, high-value forest — properties that are almost untouched and ones that you would never get access to."

When Delaware Nature Society started a program to assess riparian habitats, Dan was trained to evaluate how well a habitat was protecting the stream. He noted, "that was extra cool, because that tied together the conditions of the land and

the water." Overall, he learned that some habitats are better than others for stream health. The really good ones tended to be on conserved properties, where there was a clear effort, for instance, not to mow up to the edge of the stream, keeping the habitat natural, diverse, and well-buffered.

Dan's foray into his latest volunteer opportunity was precipitated by the work of his two sons, then teenagers and enthusiastic videographers, who filmed one of the Clean Water rallies at the Delaware Legislature in Dover for Delaware Nature Society.

Through their work, Dan was exposed to more people in the organization, who enabled him to see a bigger picture that included advocacy and regulatory issues. "It never dawned on me that they were the ones driving these larger efforts, and nobody else was really doing as much," Dan said. Once he realized that Delaware Nature Society is a major driving force in environmental advocacy in Delaware, it became far more attractive for him to get more involved. About two years ago, Dan accepted an invitation to join the Board of Directors. He finds it very rewarding to work with the staff to influence State environmental policy, such as for continued funding for clean water, repairing water ways, and conserving more green space. "I want people's kids to have the same experience as mine. And I'd like to see a lot of land conserved and [improved] water quality."

Summing up his years of volunteering, Dan points to the great job that the staff does in finding and maintaining the interest of many, diverse volunteers to do what's most needed. "They really keep volunteers as part of the whole, big team and the big picture. They always make me feel appreciated and acknowledged. I do feel like I'm part of the family now. I feel connected and vested. It's great."



SOLD OUT

farm ~~to~~ FORK

Flyway in the Byway

Contact Carrie at
Carrie@DelNature.org to be
added to the wait list.

Saturday, September 16
Coverdale Farm Preserve, Greenville, DE

Learn more at
DelNature.org/FarmToFork



Seasonal Program Registration Form

Mail or fax form to: Ashland Nature Center, P.O. Box 700, Hockessin, DE 19707 Fax: 302.239.2473 Candy@DelNature.org
Or: Abbott's Mill Nature Center, 15411 Abbotts Pond Road, Milford, DE 19963 Fax: 302.422.1849 Matt@DelNature.org

You may also register online
DelNature.org/Programs

Person Filling Out Form: _____
Home Phone: (____) _____ E-Mail: _____ OK to receive Email from us: ☐
How did you find us? _____
Address: _____ City: _____ State: _____ Zip: _____
Registrant's Name: _____ Child's Birth Date: _____ ☐ Male ☐ Female
Program Title: _____ Code: _____ Date: _____ Fee: \$ _____
Program Title: _____ Code: _____ Date: _____ Fee: \$ _____
Program Title: _____ Code: _____ Date: _____ Fee: \$ _____
Registrant's Name: _____ Child's Birth Date: _____ ☐ Male ☐ Female
Program Title: _____ Code: _____ Date: _____ Fee: \$ _____
Program Title: _____ Code: _____ Date: _____ Fee: \$ _____
Program Title: _____ Code: _____ Date: _____ Fee: \$ _____

For additional registrants, attach additional pages to this form.

Confidential Medical & Required Emergency Information (For children under 18 without parent supervision): Please list any medications, allergies (including food allergies), physical disabilities, or restrictions that the instructors should know about:

My child's physician's name & phone #: _____

My child's medical insurance is: _____

Policy #: _____

☐ Yes ☐ No: In case of emergency, I give permission to have my child(ren),

_____ receive first aid and be transported to the nearest hospital by professional emergency personnel.
I understand I will be financially responsible for the cost of such treatment.

(parent/guardian signature) _____ date _____

Payment Information (credit card information will be kept secure):

Enclosed for programs: \$ _____, for memberships \$ _____ Total enclosed: \$ _____

☐ Check ☐ Credit Card: ☐ Visa ☐ MC ☐ Disc ☐ Amex
(payable to Delaware Nature Society)

Credit Card #: _____ Exp. Date: _____ / _____ (mm/yy) 3-digit Security Code (from back of the card) _____

Authorized Signature: _____

Not a member? Sign up below and save:

- ☐ Individual \$40 ☐ Super Saver Individual \$30 (Over 60 or F/T Student)
☐ Household \$55 ☐ Household Plus \$85 ☐ Grandparent \$55
☐ Protector \$150 ☐ Patron \$500 ☐ Guardian \$1000+

Full names of all Household Members:

Adult: _____ Email: _____

Work Phone: _____ Cell Phone: _____

Adult: _____ Email: _____

Work Phone: _____ Cell Phone: _____

Child: _____ Birth Date: _____ ☐ M ☐ F

Child: _____ Birth Date: _____ ☐ M ☐ F

Child: _____ Birth Date: _____ ☐ M ☐ F

Child: _____ Birth Date: _____ ☐ M ☐ F

Policies

Payments & Discounts

All programs must be paid in full at the time of registration either by check or credit card. We can't hold spaces pending receipt of payment. To receive member discount rate, your membership must be current through the date of your scheduled program. We reserve the right to charge the Non-member rate for programs that occur after the expiration date of your membership.

Refunds and Cancellations

Requests for withdrawal 3 business days or more prior to the scheduled program date will be honored. Requests less than 3 business days will be issued if the slot is filled or at the discretion of the Education staff. Programs may be canceled due to low enrollment. Full refunds will be issued for program cancellations.

Inclement Weather

Programs will be held rain, snow, or shine. Please dress accordingly. In case of inclement weather, activities may be modified and moved indoors. Programs may be canceled (and rescheduled or refunded) due to severe weather at the discretion of our Education staff.

Photographs/Video

Delaware Nature Society reserves the right to use any photos/video/artwork of program participants to promote our mission unless otherwise notified in writing.

NATURE EXPLORER

Delaware Nature Society
P.O. Box 700
Hockessin, DE 19707



Delaware Nature Society
Harvest Moon Festival

Weekend of Oct 7 - 8, 10 am - 5 pm
Coverdale Farm Preserve
DelNature.org/HarvestMoon

Artisans | Children's Activities
Hayrides | Food Trucks | Live Music



Marsh & Monarchs Celebration

Sat, Sep 23, Noon - 4pm | Free, Just show up!

DuPont Environmental Education Center

DelNature.org/Monarchs

Catch butterflies & other creatures
Free giveaways such as swamp milkweed
Tag live butterflies for research
Canoeing the marsh & Zumba in nature



This event is part of River Days, a four-week celebration of the Delaware River watershed which provides 15 million people with clean drinking water.

